



INSTALLATION INSTRUCTIONS
STILLEM SHORT THROW SHIFTER
1990-1996 Nissan 300ZX
P/N 452000

Materials Supplied:

1. (1) Short throw shifter
2. (1) 8x1.25mm bolt
3. (1) 8x1.25mm nut

Equipment needed:

1. Assorted sockets and wrenches
2. +,- Screwdriver
3. Assorted pliers
4. Factory service manual

Installation:

1. Remove the shift knob. This is a matter of unscrewing the shift knob from the lever. This knob can be reused on the Stillem short throw shifter.
 - a. The factory uses a thread-locking compound when they install the shift knob. The use of a set of locking pliers and protective material around the shift knob may be required.
2. Remove the console finisher. This is the plastic trim on the center console around the shift lever. The console finisher is interlaced with some sections of the cluster lid (around the radio) so this will have to be removed prior to removing the console finisher.
 - a. The screws for the cluster lid are located above and below the vent openings. Decorative plastic pawls cover some of the screws.
3. Once the cluster lid is removed you can remove the two screws that retain the console finisher. Two screws are underneath the lower section of the cluster lid and another underneath the ashtray. After you remove the console finisher the following items need to be removed.
 - a. Shift lever boot and retainer
 - b. Upper and lower dust boot
 - c. Dust boot holder bracket
4. Once the items indicated have been removed the mechanicals of the shift lever will be revealed. As indicated in the diagram, the lever fulcrum point (shift lever bearing retainer) is attached to the support bracket (attached to the transmission housing). The end of the shift lever is attached to the transmission control rod.
 - a. Remove the two bolts at the bearing retainer and at the control rod.
 - b. Raise the lever up and out of the vehicle through the opening in the center floorboard.
5. Install the Stillem short throw shifter.
 - a. The Stillem short throw shifter is longer than the stock unit and will not install as an assembly. The lever must be disassembled at the bearing retainer to install.
 - i. The lever can be unscrewed near the mid-point of the shaft above the bearing retainer. Do not forget the order of assembly as mis-assembly can affect performance of the shifter.
 - b. The lower section is attached to the transmission control rod. Tighten pivot bolt to 9-12 ft-lbs.
 - c. Insert the lower shaft through the bearing retainer and install the bearing retainer on the support bracket and tighten the bracket attachment bolts to 9-12 ft-lbs. The OE bearing retainer included a mounting stud. Use the supplied hardware, included with the kit, in place of the OE stud.
 - d. Re-install the remaining portion of the upper shift lever and tighten the top section securely. We recommend 20-25 ft-lbs.
6. Assemble the dust boot support bracket and other remaining items in the reverse order of removal. Remember to check operation of the shift lever as you proceed with the installation to check that the mechanism does not bind.



WARNING:

**IF YOU ARE NOT EXPERIENCED IN THE AREA OF
AUTOMOTIVE MECHANICS WE STRONGLY URGE THAT YOU
REFER THIS INSTALLATION TO YOUR MECHANIC.**

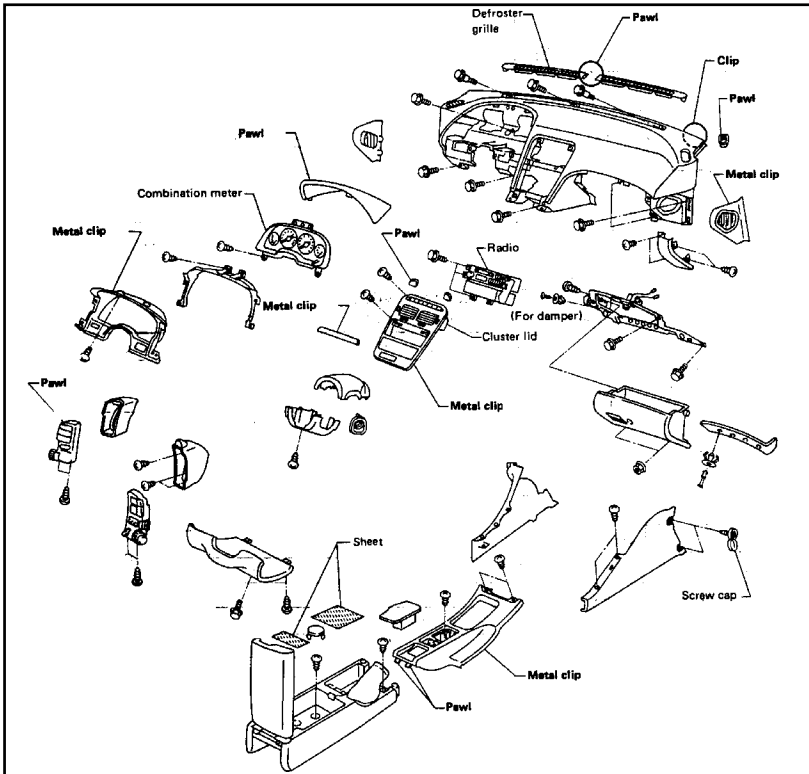
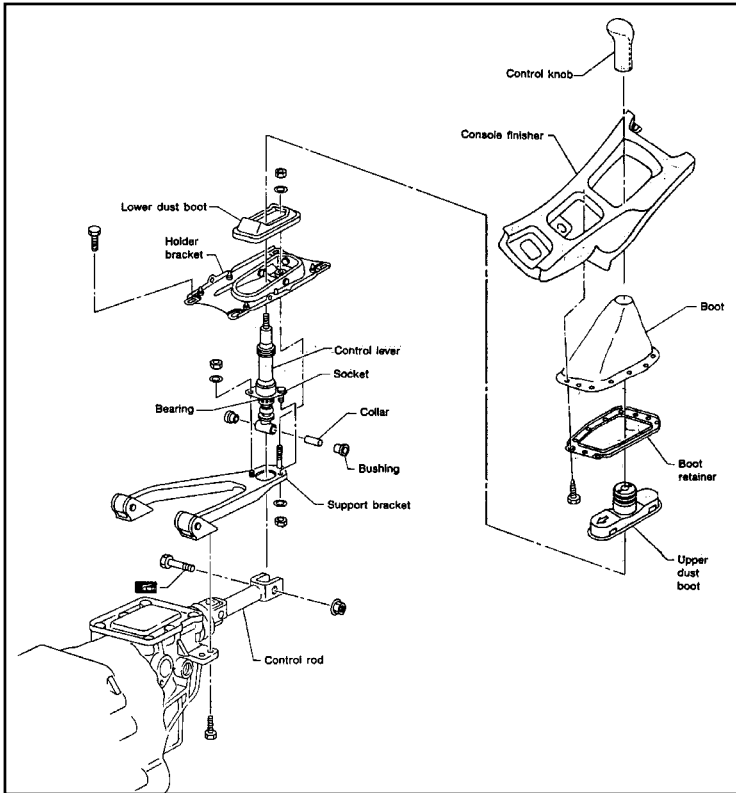


Diagram of the center console arrangement.



Stock shift lever arrangement.